



An LCL Filter Design for Three-Phase Off-Grid PV Inverters

M.K. Javid , F.Barati *

Division of Energy, Materials & Energy Research Centre (MERC), Karaj, Iran Email: f.barati@merc.ac.ir

ARTICLE INFO

Received: 27 Oct 2017
 Received in revised form: 14 Nov 2017
 Accepted: 17 Nov 2017
 Available online: 20 Nov 2017

Keywords:

Solar Electricity;
 Off-Grid Inverters;
 Filtering Unit;
 LCL Filter;
 Simulation-Aided Design

A B S T R A C T

Nowadays, the use of renewable electricity in urban outback areas has become very popular. According to the statistics, the growth in the use of local off-grid electricity has grown a lot in recent years, indicating an increasing need for this type of electrical energy. According to the fact that electrical consumers are often designed to work with alternating current, the production of electricity must have a sinusoidal waveform and, of course, within the standard limits for harmonics. Therefore, in the case of utilizing off-grid renewable sources, a standardized voltage waveform should be generated. It is achieved by employing an output filter unit. In this paper, by presenting a novel method for the LCL filter design, the output voltage and current are evaluated for a two-level three-phase inverter. The simulated and experimental results confirm the excellent performance of the designed filter.

© 2018 Published by University of Tehran Press. All rights reserved.

Introduction

Nowadays, the use of renewable electricity in urban areas has become very popular [1-2]. According to the statistics, the growth in the use of local off-grid electricity has grown a lot in recent years, indicating an increasing demand for such type of electrical energy generation [3]. To produce electrical energy in remote areas, use of primary energy sources such as fossil fuels for diesel generator systems and combined heat and power (CHP) systems, wind energy for wind power generation systems (WPGS) and solar energy for solar power generation systems (SPGS), are all economical and commonly used. Among all of these, solar energy can be the best option for power generation in remote areas, because solar power systems have simpler processes for maintenance which is so important for remote areas.

Considering that the electricity produced by the photovoltaic panels is DC and most electric power consumers use alternating current (AC), power electronics should be used to convert DC power to AC. Different structures are employed for such purposes; among which a two-level three-phase inverter has simplicity and, at the same time, it gives a high utilization for low powers. If a three-phase two-level inverter is switched by the SPWM^a method, the output has many harmonics which requires the use of a filter unit [4-8]. The three common types are L, LC, and LCL.

In the L structure, as shown in Fig.(1-a), an inductor is used between the inverter and the grid. Because of the fact that it is a first-order system, this structure has a low downgrade capability. To overcome to this problem, we need to increase the

^a Sinusoidal Pulse-Width Modulation

switching frequency. This will increase the switching losses in the converter, so it's not advisable to do so. Also, increasing the capacity of the inductance can increase the severity of the weakening, but this strategy causes an increase in Electromagnetic Interferences (EMI). Therefore, this structure is not a good solution for harmonics reductions. The LC structure, as seen in Fig.(1-b), consists of an inductor and a capacitor which results in a second-order system. It has a better attenuation than the L structure, but still needs a large inductance. In addition, a relatively large capacitor in this structure is needed. This structure requires a damper circuit to prevent resonances in the filter unit. The structure of the LCL filter, as seen in Fig.(1-c), creates a third-order system, so it performs well in the attenuation of the high-order harmonics. In order to avoid the resonances in this structure, a damper circuit is used. Different damping structures are already employed [9-11]. In this paper, a simple damping structure which includes a series resistance with the filter capacitor is used. In Table 1, the comparison between the three filters types is discussed. With respect to the advantages of the LCL structure, this structure is selected and assess in this article.

Nowadays, strong simulations tools such as Matlab/Simulink and PSCAD/EMTDC are available which can predict the behaviour of power electronics systems accurately. They can perform as design tools; instead of the conventional design approaches which are mainly based on analytical expressions. In this paper, we effectively employed simulations in the design procedure of LCL filter [12].

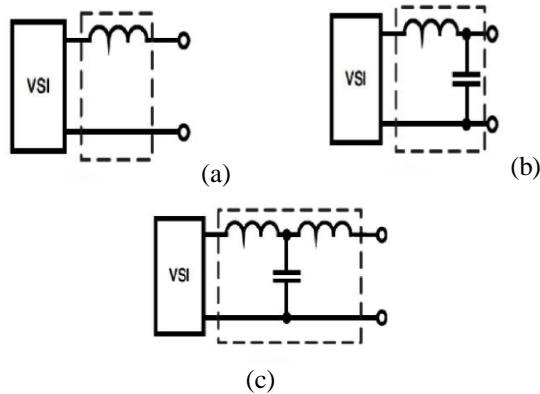


Figure 1. L, LC, and LCL topologies

Filter Type	L	LC	LCL
Switching Frequency	Very High	Relatively Low	Low

Volume and Weight of Inductors	High	Medium	Low
Requires a Damper Circuit	No	Yes	Yes
Size of Capacitor	N/A	Large	Small
Power Rating	Low	Low – Medium	Low–Medium–High

2. Proposed approach for LCL filter design

To start the design, we start from deriving the transfer function of the inverter output voltage to the current injected into the network.

$$H(S) = \frac{I_g(S)}{V_i(S)} \quad (1)$$

With respect to the effect of the damper resistance in the filter and the resistance of the inductors, the transfer function is written as follows:

$$H(S) = \frac{Z_f}{Z_g Z_i + Z_g Z_f + Z_f Z_i} \quad (2)$$

Here, Z_i is the impedance connected to the inverter, Z_f is the parallel impedance of the filter, and Z_g is the impedance connected to the network. If the resistance of the inductors is ignored and the damper circuit is considered a series resistance with the capacitor, the transfer function is:

$$H(S) = \frac{R_f C_f + 1}{L_i L_g C_f S^3 + R_f C_f (L_i + L_g) S^2 + (L_i + L_g) S} \quad (3)$$

This is a third-order transfer function that leads to a strong suppression of high-order harmonics. In Fig.2, the LCL structure is represented with a damping circuit.

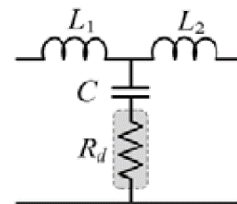


Figure 2. LCL filter with damping resistor

Inputs	
P_n	5000 Watts
f_{sw}	10000 Hz
f_g	50 Hz
V_{ph}	230 Volts
V_{dc}	750 Volts
Outputs	

$L_i = 4.7 \text{ mH}$
$L_g = 2.3 \text{ mH}$
$C_f = 2.5 \text{ uF}$
$R_d = 10 \Omega$

In order to design the LCL filter, the values of the phase voltage, switching frequency, network frequency, nominal active three-phase power and the DC link voltage are required. The filter design process is as follows.

Table 3: Final values of proposed filter design approach
Outputs
$L_i = 0.8 \text{ mH}$
$L_g = 0.5 \text{ mH}$
$C_f = 4.7 \text{ uF}$
$R_d = 1 \Omega$

The design flowchart is shown in Appendix. We present the design for a 5kW inverter based on the flowchart and by employing the simulations in Matlab/Simulink. Considering the flowchart, the input and output values are as in Table2.

By employing the simulation tool, output values result in a $THD_i = 2\%$. According to the std. IEEE519-2014 [13], the injected current to grid total harmonics distortions, THD_i , can be increased up to 5%. Therefore the values of filter can be chosen to reduce weight and volume of filter to control mechanical stresses on printed circuit board and also EMI. Generally, we are interested to reduce inductors sizes [14, 15]:

- To reduce eddy and hysteresis losses.
- To reduce copper losses.
- To reduce Electromagnetic Interference.
- To increase active and reactive power exchange between solar power plant and utility grid.

With regards to the frequency analysis, it is concluded that:

- By decreasing the values of inductors, the THD of voltage and current decreases.
- By decreasing the value of capacitor, the THD of voltage and current decreases.
- By increasing the value of the damping resistance, the THD of voltage and current increases.

According to the above statements, the goal is the reduction of inductances and resistance. Also, the value of capacitance must be in the standard range. In this step of design, with the help of simulation tool, optimized values for filter parameters are obtained as in Table 3.

Based on the obtained values, the THD of output voltage and current is less than 5%. This yields to observe standard limits and achieve the goals. For the obtained transfer function and based on the final values for filter parameters, the Bode diagram is

drawn as in Fig.3. Based on this diagram, it can be concluded that:

- Good performance of filter unit in high-order harmonics suppression is achieved.
- In low frequencies, where the fundamental frequency is located, filter performs such as an inductance. In the other words, the parallel branch can be considered as open-circuited.
- The filter performance, with respect to the phase-margin and gain-margin concepts, is stable and therefore, the damping circuit has the desired behavior.

3. Simulation Results

According to filter parameters obtained in the previous section, here THD_i & THD_v and their wave-forms are presented. As shown in Fig.4, and Fig.5, the peak instantaneous voltage and current are exactly equal to 325 volts and 10.25 amperes, respectively leading to:

$$P = \frac{3}{2} \times 325 \times 10.25 = 5000 \text{ W} \quad (4)$$

Also for the case of THD, it is visible that the standard limits are met.

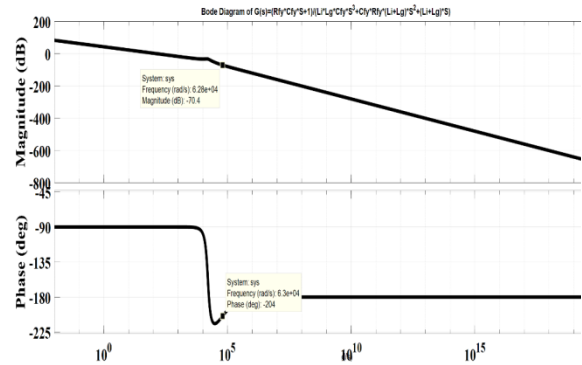
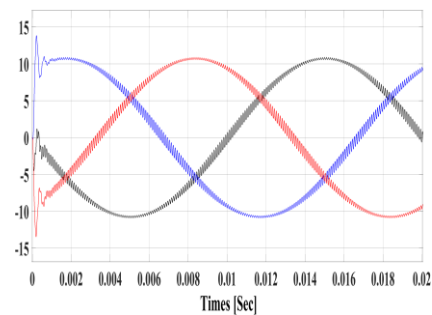


Figure 3. Bode diagram of designed LCL filter



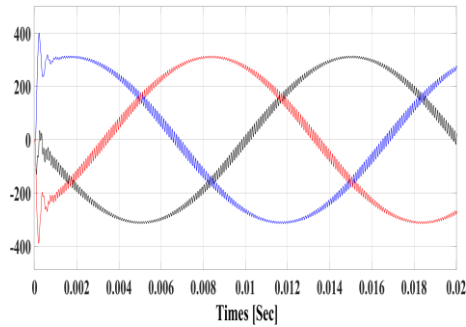


Figure 4. Output current (up) and voltage (bottom) of inverter

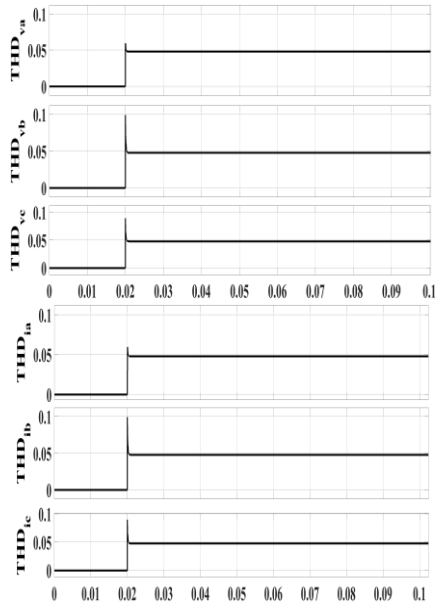


Figure 5. THD_v (up) and THD_i (bottom)

4. Experimental Results

To implement the simulated circuit and to have experimental assessment of proposed method, a 5 KW inverter is designed and implemented. This inverter is shown in Figure 6. In this figure, we have:

1. Oscilloscope
2. Three-phase miniature fuse
3. Multi-meter
4. DC link Capacitance
5. Inverter Board With LCL filter
6. Microcontroller
7. Power Supply

In order to test the designed filter in experiments, three 220 V, 200W lamps are considered as the three-phase load. In Fig.7, three-phase voltage and current at the output of inverter is shown confirming the excellent performance of filter in attenuating harmonics produced by the inverter.

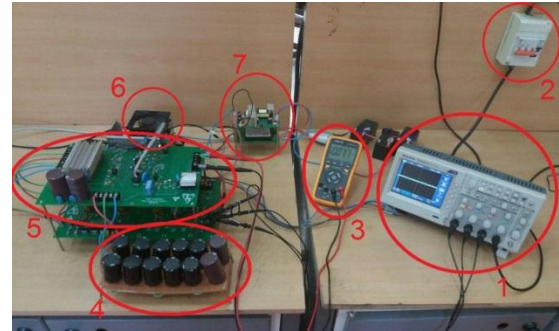


Figure 6. Experimental set-up

5. Conclusions

In this article, a novel method for the LCL filter design is proposed. The method employs both of the analytical as well as simulation tools leading to optimum values for parameters of filter. Based on the simulation and experimental results, the proposed approach for LCL filter design can meet the standard limits at the optimum size of filter parameters.

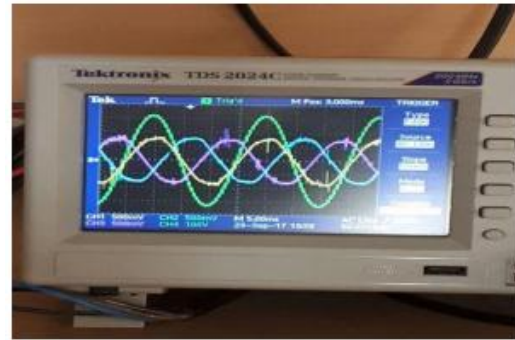


Figure 7. Experimental results

References

- [1] Ariel Bergmann, Sergio Colombo, Nick Hanley, Rural versus urban preferences for renewable energy developments, In Ecological Economics, Volume 65, Issue 3, 2008, Pages 616-625.
- [2] Bruce N. Stram, Key challenges to expanding renewable energy, In Energy Policy, Volume 96, 2016, Pages 728-734
- [3] A.S. Bahaj, P.A.B. James, Urban energy generation: The added value of photovoltaics in social housing, In Renewable and Sustainable Energy Reviews, Volume 11, Issue 9, 2007, Pages 2121-2136.
- [4] M. A. Elsaharty, Passive L and LCL filter design method for grid-connected inverters, Innovative Smart Grid Technologies - Asia (ISGT Asia), 2014 IEEE, Kuala Lumpur, 2014, pp. 13-18.
- [5] Beres, Remus, et al. A review of passive filters for grid-connected voltage source converters. Applied Power Electronics Conference

and Exposition (APEC), 2014 Twenty-Ninth Annual IEEE. IEEE, 2014.

[6] Huang, Min, et al. Step by step design of a high order power filter for three-phase three-wire grid-connected inverter in renewable energy system. Power Electronics for Distributed Generation Systems (PEDG), 2013 4th IEEE International Symposium on. IEEE, 2013.

[7] Chakraborty, Sudipta, Bill Kramer, and Benjamin Kroposki. A review of power electronics interfaces for distributed energy systems towards achieving low-cost modular design. Renewable and Sustainable Energy Reviews 13.9 (2009): 2323-2335.

[8] Paulino, Hendriks Delesposte, Paulo José Mello Menegáz, and Domingos Sávio Lyrio Simonetti. A review of the main inverter topologies applied on the integration of renewable energy resources to the grid. Power Electronics Conference (COBEP), 2011 Brazilian. IEEE, 2011.

[9] L. Hassaine, E. OLias, J. Quintero, V. Salas, Overview of power inverter topologies and control structures for grid connected photovoltaic systems, Renewable and Sustainable Energy Reviews, Volume 30, February 2014, Pages 796-807.

[10] Mehmet Büyük, Adnan Tan, Mehmet Tümay, K. Çağatay Bayındır, Topologies, generalized

designs, passive and active damping methods of switching ripple filters for voltage source inverter: A comprehensive review, Renewable and Sustainable Energy Reviews, Volume 62, September 2016, Pages 46-69.

[11] M. Sanatkar-Chayjani, M. Monfared, Design of LCL and LLCL filters for single-phase grid connected converters, IET Power Electronics, Volume 9, Number 9, 2016, Pages 1971-1978.

[12] R.A.Dougal, Simulation methods for design of networked power electronics and information systems, Technical Report, 2014.

[13] IEEE519-2014, Recommended practice and requirements for harmonic control in electric power systems.

[14] Y. Liu, Jianchun Peng, Guibin Wang, Huaizhi Wang, K. Y. See, THD and EMI performance study of foil-wound inductor of LCL filter for high power density converter, IEEE IP EMC-ECCE Asia, 2016, Pages 3467-3471.

[15] M.I.Hamid, A.Jusoh, Reduction of waveform distortion in grid-injection current from single-phase utility interactive PV-inverter, Energy Conversion and Management, Volume 85, 2014, Pages 212-226.

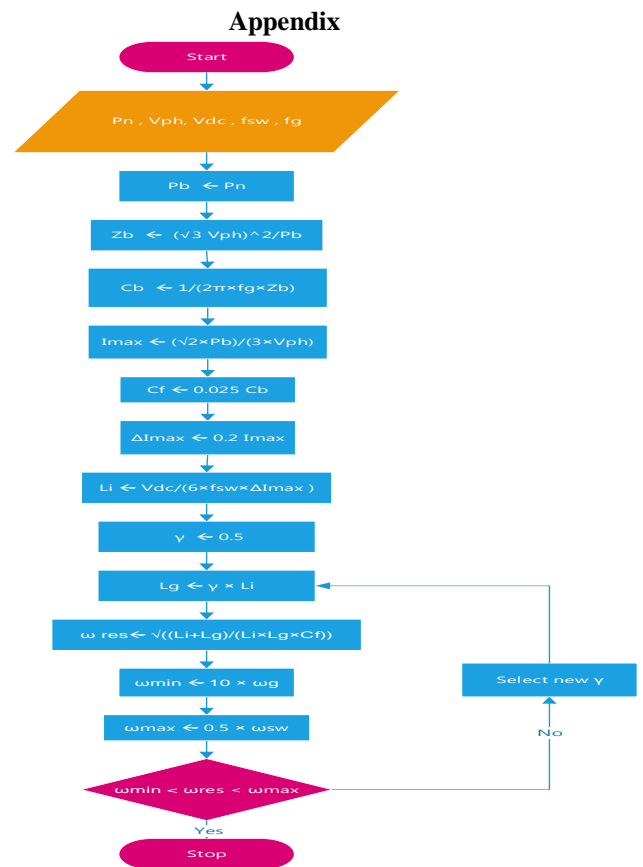


Figure (A-1): Proposed flowchart for LCL filter design